

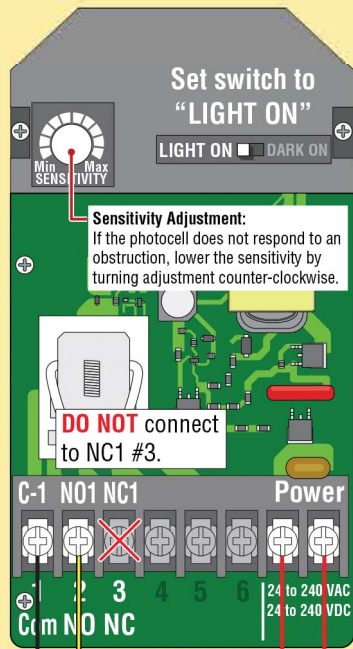
COMMONLY USED SAFETY SENSORS

OMRON E3K-R10K4



**Photocell (Reflector)
CLOSING Direction**

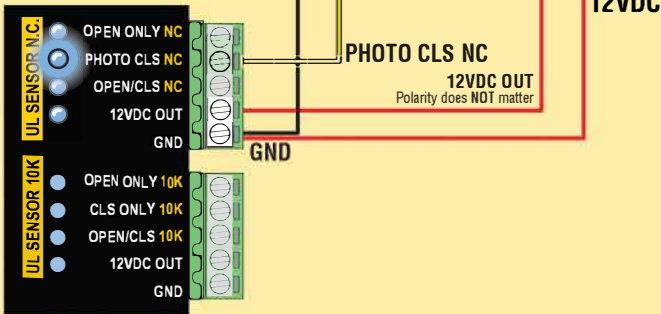
NOTE: To meet the UL 325 2018 standard, Type B1 Non-Contact sensor entrapment protection device **MUST** be **MONITORED** by the gate operator.



NOTE: **DO NOT** use 10K Resistor included with photocell.

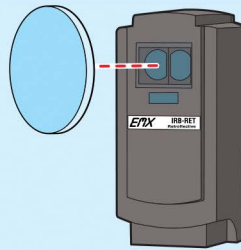
Installation Steps:

1. Set switch to "LIGHT ON"
2. Wire 12V power to photocell
3. Wire PHOTO CLS NC to photocell NO1
Wire GND to photocell C-1
4. Align photocell to reflector
5. Adjust sensitivity



IMPORTANT: Photocell **MUST** be in alignment with reflector or fault will occur.

EMX IRB-RET



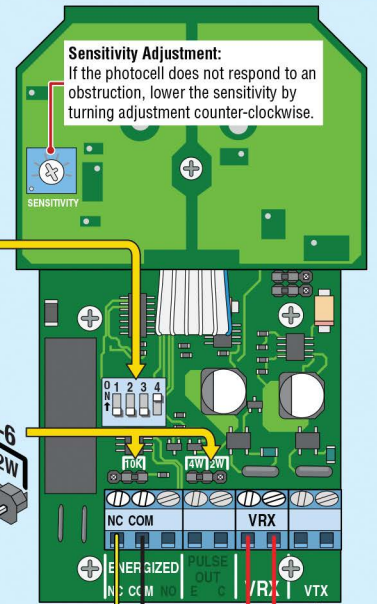
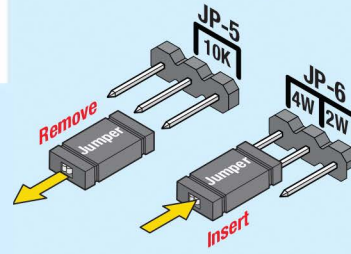
**Photocell (Reflector)
CLOSING Direction**

Sensitivity Adjustment:
If the photocell does not respond to an obstruction, lower the sensitivity by turning adjustment counter-clockwise.

DIP-Switches

- 1 - OFF
- 2 - OFF
- 3 - OFF
- 4 - ON

NOTE: Power must be cycled when switches are changed.

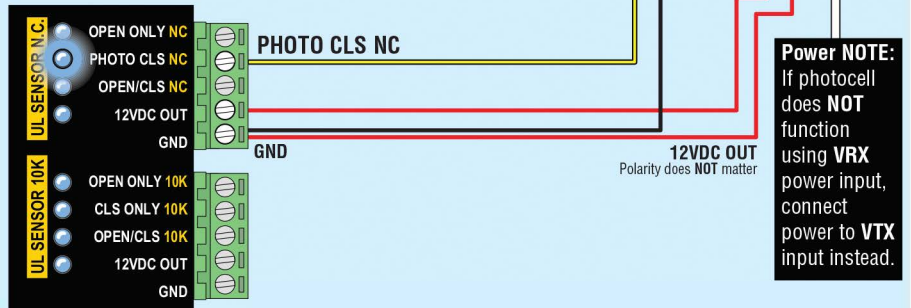


IMPORTANT: Photocell **MUST** be powered by MATRIX III or it will **NOT** be **MONITORED**.

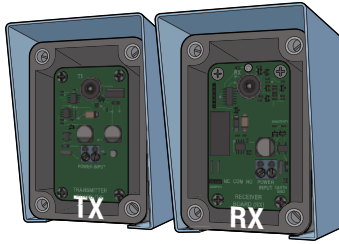
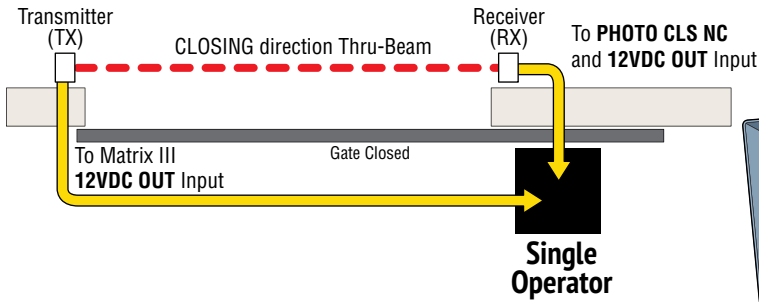
NOTE: To meet the UL 325 2018 standard, Type B1 Non-Contact sensor entrapment protection device **MUST** be **MONITORED** by the gate operator.

Installation Steps:

1. Set DIP-switches
2. Remove jumpers JP-5 and JP-6
3. Wire 12V power to photocell (VRX)
4. Wire Matrix III PHOTO CLS NC to photocell NC (Energized)
Wire Matrix III GND to photocell COM (Energized)
5. Align photocell to reflector
6. Adjust sensitivity

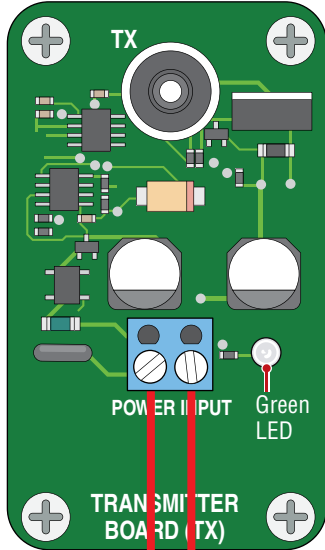


Photocell (Thru-Beam) CLOSING Direction Single Gate Operator



IMPORTANT: Photocells **MUST** be in alignment or fault will occur. Green LED will remain **ON** receiver when in proper alignment.

Transmitter (TX)



Installation Steps:

1. Set DIP-switches on receiver.
2. Install jumper on receiver.
3. Wire Matrix III 12VDC OUT power to receiver.
4. Wire PHOTO CLS NC to receiver photocell NC. Wire Matrix III GND to receiver photocell COM.
5. Wire 12V Matrix III power to transmitter.
6. Align photocells.
7. Adjust sensitivity on receiver.

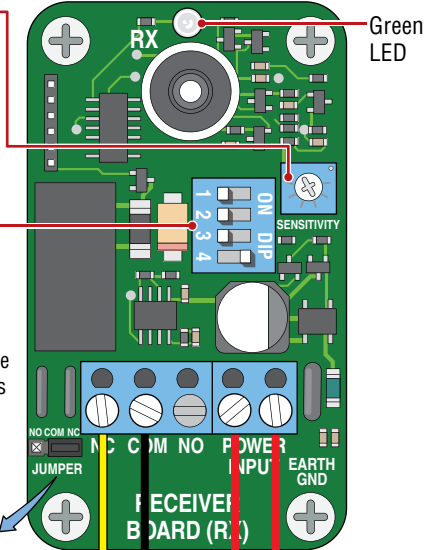
Sensitivity Adjustment:

If the photocell does not respond to an obstruction, lower the sensitivity by turning adjustment counter-clockwise.

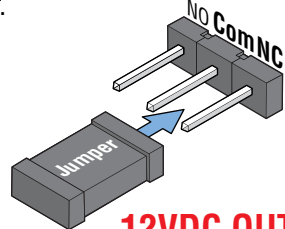
DIP-switches:

1, 2, 3 are OFF. Switch 4 is ON. If trouble occurs, try turning switch 4 OFF. **NOTE:** Power must be cycled when switches are changed.

Receiver (RX)



Jumper **MUST** be on Com-NC.



12VDC OUT
Polarity does **NOT** matter

IMPORTANT: Photocells **MUST** be powered by Matrix III or they will **NOT** be **MONITORED**.

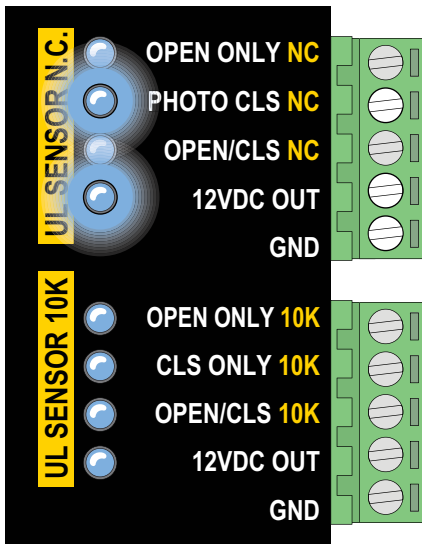


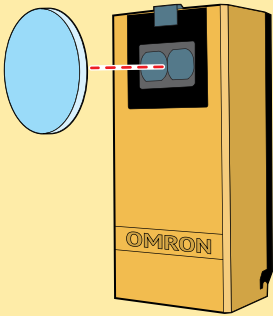
PHOTO CLS NC - Normally Closed

GND - Common

NOTE: To meet the UL 325 2018 standard, Type B1 Non-Contact sensor entrapment protection device **MUST** be **MONITORED** by the gate operator.

UL325-2016

NORMALLY CLOSED (NC) Wiring to E3K Photocell

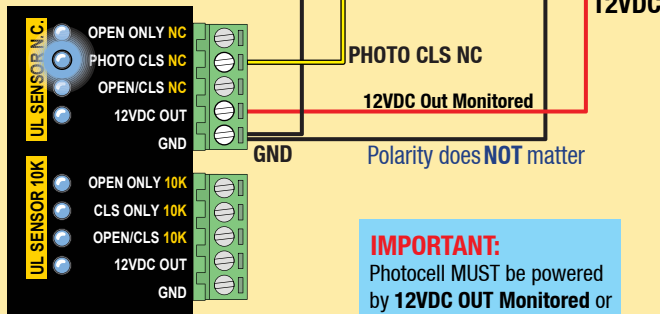
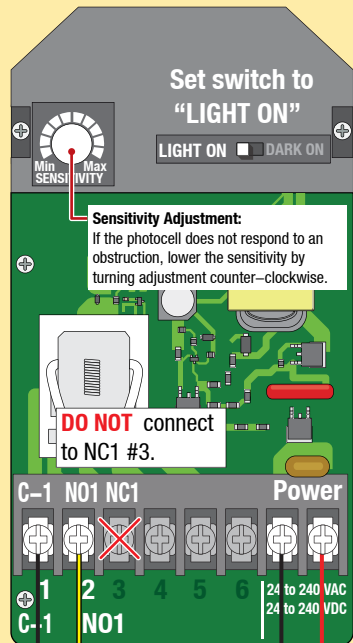


CLOSING Direction Photocell (Reflector)

NOTE: To meet the UL 325 2016 standard, Type B1 Non-Contact sensor entrapment protection device MUST be MONITORED by the gate operator.

Installation Steps:

1. Set switch to "LIGHT ON"
2. Wire 12V power to photocell
3. Wire **PHOTO CLS NC** to photocell **NO1**
Wire **GND** to photocell **C-1**
4. Align photocell to reflector
5. Adjust sensitivity

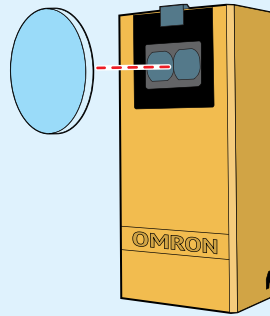


IMPORTANT:
Photocell MUST be powered by 12VDC OUT Monitored or it will NOT be MONITORED.

NOTE: DO NOT use 10K Resistor included with photocell.

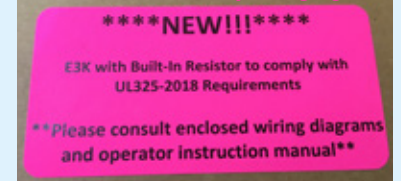
UL325-2018

NORMALLY CLOSED (NC) Wiring to E3K Photocell



CLOSING Direction Photocell (Reflector)

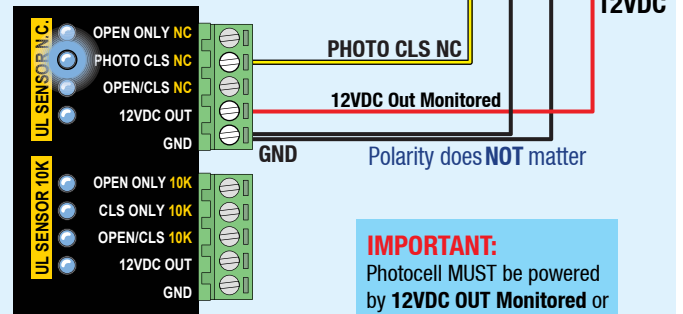
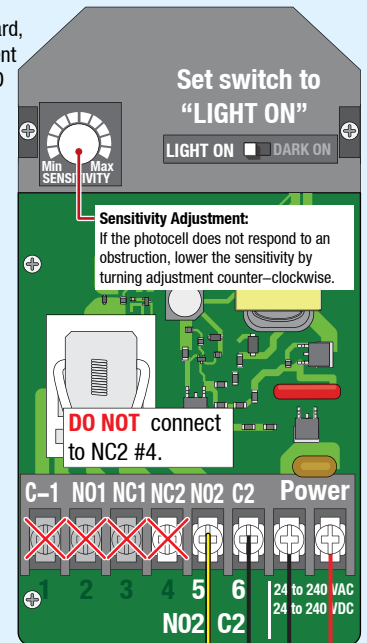
UL 2018 Label on packaging



NOTE: To meet the UL 325 2018 standard, Type B1 Non-Contact sensor entrapment protection device MUST be MONITORED by the gate operator.

Installation Steps:

1. Set switch to "LIGHT ON"
2. Wire 12V power to photocell
3. Wire **PHOTO CLS NC** to photocell **NO2**
Wire **GND** to photocell **C2**
4. Align photocell to reflector
5. Adjust sensitivity



IMPORTANT:
Photocell MUST be powered by 12VDC OUT Monitored or it will NOT be MONITORED.

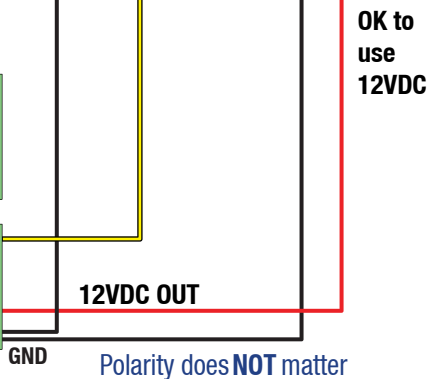
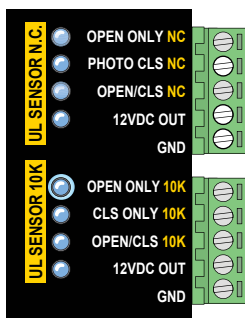
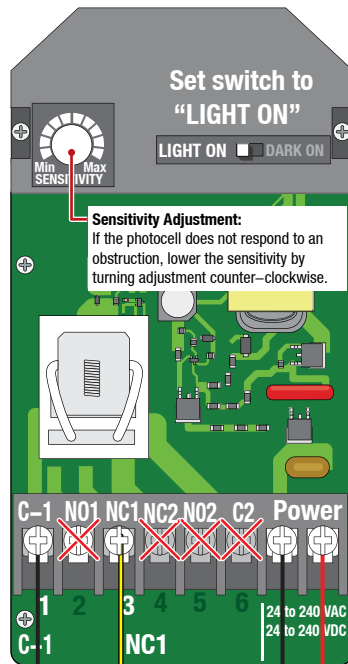
For 10K Resistor E3K Photocell wiring see next page

UL325-2018

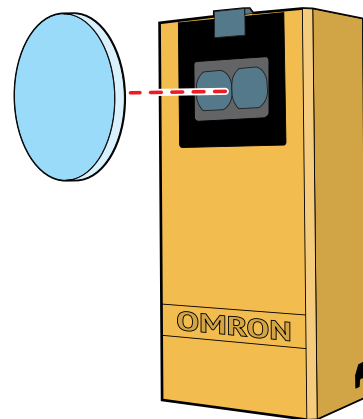
10K Resistor wiring to E3K Photocell

Installation Steps:

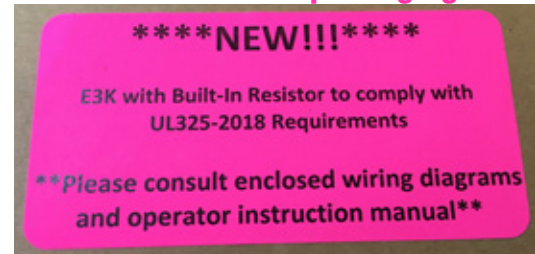
1. Set switch to "LIGHT ON"
2. Wire 12V power to photocell
3. Wire **OPEN ONLY 10K** to photocell **NC1**
Wire **GND** to photocell **C-1**
4. Align photocell to reflector
5. Adjust sensitivity



OPENING Direction Photocell (Reflector)



UL 2018 Label on packaging



NOTE: To meet the UL 325 2018 standard, Type B1 Non-Contact sensor entrapment protection device **MUST** be MONITORED by the gate operator.

EMX WEL-200 Wiring Guide FOR MAX PRO SERIES



RECEIVER WEL-200R

OPENING TRANSMITTER



WEL-200T

CLOSING TRANSMITTER

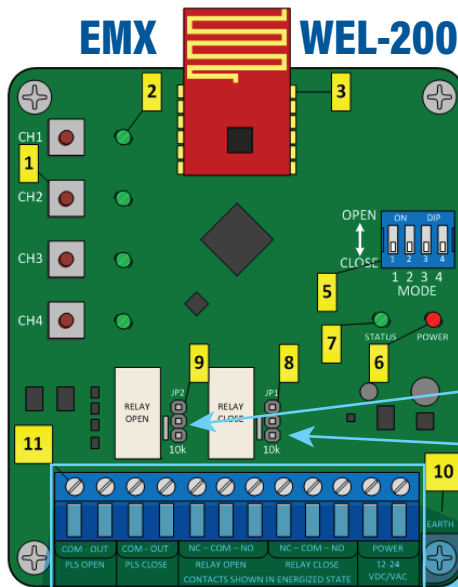


WEL-200T

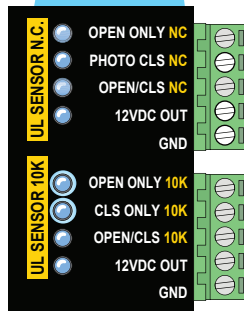
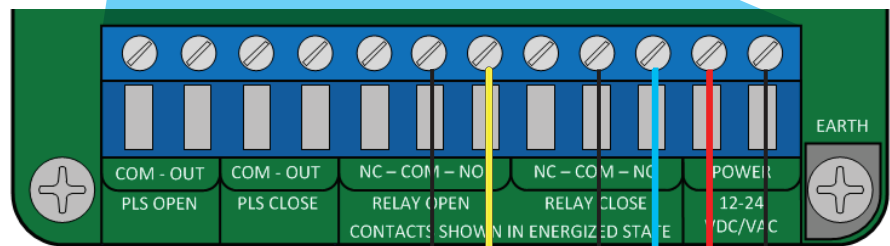
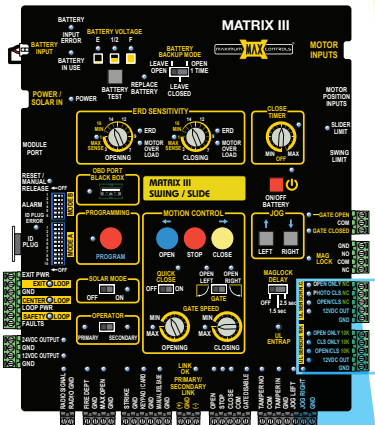
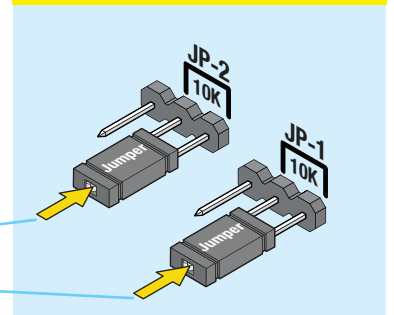


1 WIRE WEL-200R OPEN & CLOSE RELAYS TO MATRIX III 10K SENSOR INPUTS

EMX WEL-200R



2 INSERT BOTH JUMPERS IN 10K POSITION

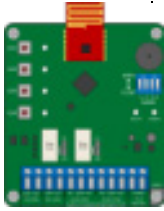


WIRE TO 'NO' OF RELAY OPEN
WIRE TO 'NO' OF RELAY CLOSE

GND

Polarity does **NOT** matter for power

Connecting is a two step process. First, on the receiver, press and hold the channel assignment switch until the green status LED begins rapidly flashing, then release; this will clear any existing assignment for that particular channel. Hold down the connection switch on the transmitter. If it is not currently connected to a receiver, it will begin flashing rapidly until successfully connecting. Detailed instructions are given below.



NOTE: If there are no existing connections, the *receiver's* status LED will blink rapidly while it is finding a clean operating frequency (this can last a few seconds)
After initialization, the system status LED will flash on/off once every 2 seconds

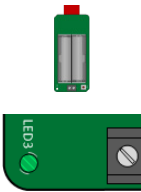
STEPS

1



Set each channel to the desired OPEN/CLOSE direction function using the MODE dip switch
If a DIP switch is in the OPEN position, then that channel will trigger the OPEN Relay on receiver. Otherwise, it will trigger the CLOSE Relay.

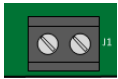
2



Install 2 AA Lithium batteries in the **WEL-200T (transmitter)**

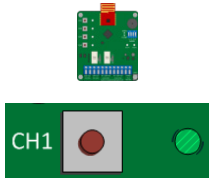
The green LED on the transmitter will quickly flash 2x every two seconds

3



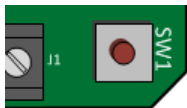
Install a properly terminated edge to the **transmitter** (8.2k or 10k termination)

4



On the **receiver**, hold down the desired channel assignment switch until all four channel LED's activate and the system status LED begins flashing rapidly, then release the switch.

5



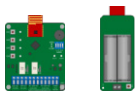
On the **transmitter**, hold down the connection switch (next to the terminal block)

The LED on the **transmitter** will begin flashing rapidly after ~4 seconds



Upon successful connection, the LED will flash once every two seconds
If the **transmitter** fails to connect, it will return to its initial state, with the LED flashing twice every two seconds. If this occurs, repeat steps above.

TESTING



Without activating the edge, observe the channel status LED, it should be OFF.

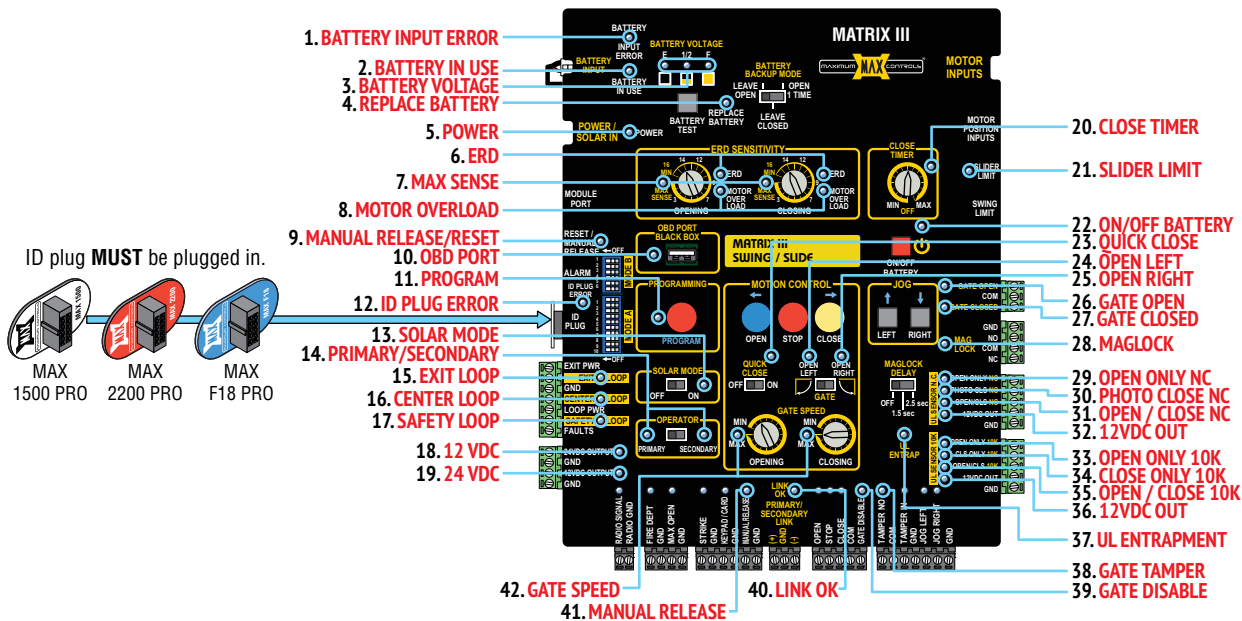


When the edge is activated, the **receiver** channel status LED will turn on and the corresponding OPEN/CLOSE direction output will activate. The **transmitter** status LED will blink once every *second* when the edge is activated.



If the channel does not exhibit this behavior, double check the edge wiring/termination and transmitter batteries.

MATRIX III LED TROUBLESHOOTING



Matrix III LED Problem Condition	Normal LED	Solution(s) for Problem Condition
"BATTERY IN ERROR" LED is ON. "BATTERY IN USE" LED is ON	1 OFF 2	<ul style="list-style-type: none"> "BATTERY Plug" not plugged in to "BATTERY IN" port. AC power is lost, operator is in battery back-up mode. Check if Toroid box AC POWER ON/OFF SWITCH is ON. Measure power input DC voltage on Matrix 1 ("24V/GND" - 2-pin black connector), (expected reading 34 VDC if AC on, 25VDC if on battery back-up).
"BATTERY VOLTAGE (E 1/2 F)" LEDs, only "E" is ON. "REPLACE BATTERY" LED is ON.	OFF 3 4	<ul style="list-style-type: none"> Battery is very LOW. Check if AC power ON/OFF switch is ON. If so, check AC power. Battery needs to be replaced if BATTERY TEST fails and "REPLACE BATTERY" LED is ON.
"BATTERY IN USE" and "POWER" LED are FLASHING PRIMARY Matrix III "LINK OK" LED is OFF	OFF / ON 2 / 5 40	<ul style="list-style-type: none"> Battery not plugged in to BATTERY INPUT port. Check if limit sensors are plugged into PRIMARY MATRIX III "SLIDER LIMIT" input.
SECONDARY Matrix III "LINK OK" LED is OFF	ON 40	<ul style="list-style-type: none"> Check wiring between PRIMARY RS485 (+, -, gnd) and SECONDARY RS485 (+, -, gnd) terminals, connect [(+) to (+)], [(-) to (-)] and [GND to GND]. Check if limit sensors are plugged into SECONDARY Matrix III "SLIDER LIMIT" input.
"UL Entrap" LED is ON	ON 37	<ul style="list-style-type: none"> An entrapment event has occurred, check if an entrapment sensor was triggered (see if PHOTO CLS, OPEN ONLY, or OPEN/CLS LEDs are on).
"ERD" LED is FLASHING	ON 6	<ul style="list-style-type: none"> An ERD event may have occurred. Check for gate obstruction. ERD sensitivity is too high for application. Re-adjust ERD setting, (see 8).
"PHOTO CLS" LED is ON "CLS ONLY 10K" LED is ON	OFF 30 / 34	<ul style="list-style-type: none"> Sensor on PHOTO CLS or CLS ONLY 10K inputs (photocell or edge) may have detected an obstruction while closing gate. Photocell on PHOTO CLS or CLS ONLY 10K inputs is misaligned with reflector.
"PHOTO CLS" LED is flashing "CLS ONLY 10K" LED is flashing	OFF 30 / 34	<ul style="list-style-type: none"> Sensor on PHOTO CLS or CLS ONLY 10k inputs (photocell or edge) may not be wired properly, (see 5). Sensor is NOT a N.C. monitored sensor that is UL325 2018 compliant.
"OPEN ONLY" LED is ON	OFF 29 / 33	<ul style="list-style-type: none"> Sensor might need to be re-learned. Sensor is damaged or malfunctioning.
"OPEN ONLY" LED is FLASHING	OFF 29 / 33	<ul style="list-style-type: none"> Sensor on OPEN ONLY input (photocell or edge) may have detected an obstruction while cycling gate. Photocell on OPEN ONLY input is misaligned with reflector. Sensor on OPEN ONLY input (photocell or edge) may not be wired properly, (see 5). Sensor is NOT a N.C. monitored sensor that is UL325 2018 compliant.
"MAX SENSE" LED is ON	OFF 7	<ul style="list-style-type: none"> Sensor on OPEN ONLY is damaged or malfunctioning. Sensor might need to be re-learned.
"MANUAL RELEASE/RESET" LED is ON but manual release is not working "OBD PORT" LED is FLASHING	OFF 9 / 41 10	<ul style="list-style-type: none"> MOST sensitive setting for ERD entrapment detection. Select a less sensitive setting (recommend level 10 thru 16) Connected external device to MANUAL RELEASE input is not working, check wiring. replace device. Up to 8000 event history and error codes are being downloaded to connected flash drive. Up to 5 min.
"PROGRAM" LED is FLASHING	OFF 11	<ul style="list-style-type: none"> Program button has been pressed and programming mode is active. Press button again to leave programming mode.

Table continued on next page

MATRIX III LED CONTINUED

Matrix III LED Problem Condition	Normal LED	Solution(s) for Problem Condition
"ID PLUG" LED is FLASHING and board beeping	OFF 12	<ul style="list-style-type: none"> • Insert ID PLUG module that is tethered to chassis into "ID PLUG" connector.
"SOLAR MODE" LED is ON	OFF 13	<ul style="list-style-type: none"> • Operator is being powered by solar panel ONLY.
"OPEN/CLS" LED is ON	OFF 31	<ul style="list-style-type: none"> • Sensor on OPEN/CLS input (photocell or edge) may have detected an obstruction while opening or closing gate.
"OPEN/CLS" LED is FLASHING		<ul style="list-style-type: none"> • Photocell on OPEN/CLS input is misaligned with reflector. • Sensor on OPEN/CLS input (photocell or edge) may not be wired properly, (see 5). • Sensor is NOT a N.C. monitored sensor that is UL325 2018 compliant. • Sensor on OPEN/CLS is damaged or malfunctioning. • Sensor might need to be re-learned.
"MOTOR OVERLOAD" LED is ON	OFF 8	<ul style="list-style-type: none"> • Check if gate is binding against catch post or bracket in opened or closed position. • Check if gate moves manually with low resistance throughout its full range of motion. • Check if chain is installed inline with idle wheels in both OPEN and CLOSED positions.
"EXIT" LOOP LED is FLASHING or constantly ON	OFF 15	<ul style="list-style-type: none"> • Loop fault condition: Check if EXIT loop wires are connected into to loop input connector properly. • Check if loop detector is inserted properly in Loop Rack slot. • Set unique loop detector frequency for each loop detector used. • Loop Detector might be defective. Replace defective loop detector. <p>NOTE: RENO loop detector LED's flash as default, but function normally (ignore the flashing).</p>
"SAFETY" LOOP LED is FLASHING or constantly ON	OFF 17	<ul style="list-style-type: none"> • Loop fault condition: check if SAFETY loop wires are connected into to loop input connector properly. • Check if SAFETY loops are wired in series. • Check if loop detector is inserted properly in Loop Rack slot. • Set unique loop detector frequency for each loop detector used. • Loop Detector might be defective. Replace defective loop detector. <p>NOTE: RENO loop detector LED's flash as default, but function normally (ignore the flashing).</p>
"GATE DISABLE" LED is ON	OFF 35	<ul style="list-style-type: none"> • Check if "Gate Shut-off" switch is ON, Turn it OFF. If it is OFF, cycle the switch (ON then OFF). • Check if the chain is dropped. If so, gate is disabled for safety. Re-install chain and cycle the "Gate Shut-off" switch (ON then OFF) to enable operator. • Check if an external device is triggering GATE DISABLE input. Disconnect devices individually to determine possible false triggering of GATE DISABLE.
"MAG LOCK" LED is FLASHING	OFF 28	<ul style="list-style-type: none"> • Maglock power is lost. Check if maglock power transformer is wired properly or needs to be replaced. • Switch is set to delay but no maglock is connected. Set switch to OFF
"GATE TAMPER" LED is FLASHING	OFF 34	<ul style="list-style-type: none"> • Gate was manually moved off of its CLOSED position causing Tamper Relay to trigger for few seconds.
"12VDC" LED is OFF. "24VDC" LED is OFF	ON 18 or 19	<ul style="list-style-type: none"> • Check for a short in wiring to connected device. DO NOT power external keypads or telephone entry to this port (only use for radio receiver / photocell).
"SLIDER LIMIT" LED is ON	OFF 21	<ul style="list-style-type: none"> • Only ON if factory installed plug is plugged in. Re-install plug into SWING LIMIT connection for swing gate operator.
"ON/OFF BATTERY" LED is OFF	ON 22	<ul style="list-style-type: none"> • Batteries are turned OFF. Turn toroid box AC POWER switch ON and batteries automatically turn ON.
"QUICK CLOSE" LED is ON	OFF 23	<ul style="list-style-type: none"> • Quick Close feature is turned ON. If this feature is not desired, turn quick close OFF.
"GATE SPEED" LEDs are ON but gate moves slowly.	ON 42	<ul style="list-style-type: none"> • Check if OPEN and CLOSE Limits have been learned. Refer to "Learn Gate Positions" (see 7). • ONLY Maximum settings will turn LEDs ON. All other settings, LEDs remain OFF.